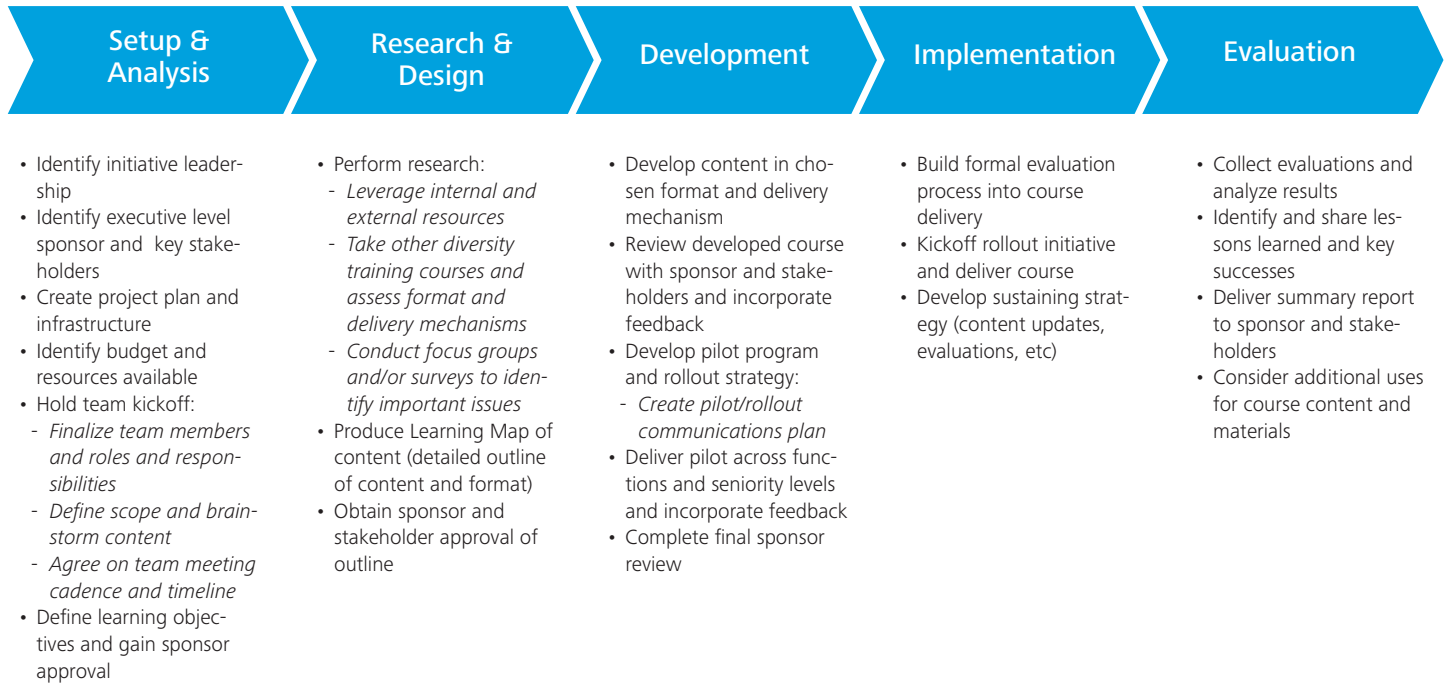
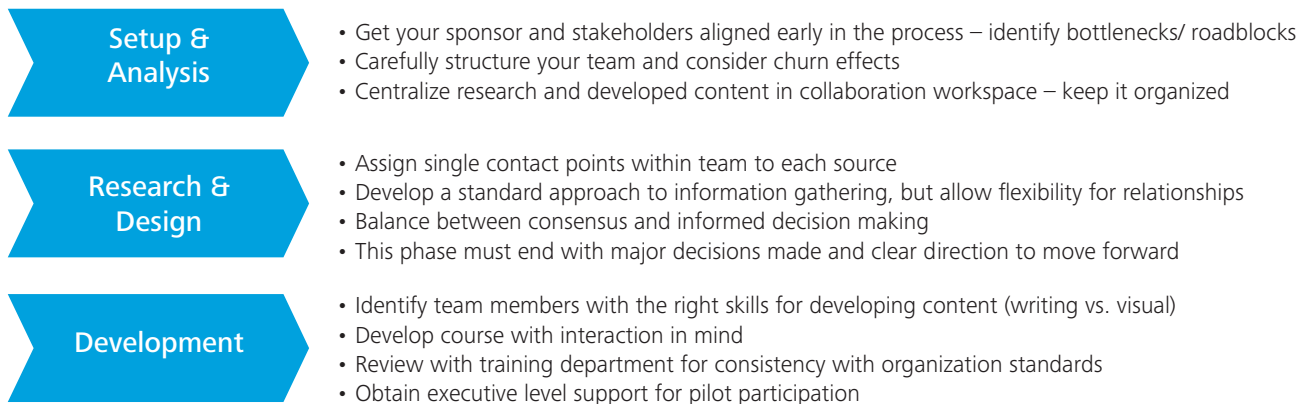


Best practices for supporting LGBT staff Instructional design methodology



Lessons learned:



Best practices for supporting LGBT staff

LGBT content and best practice resources

Resource	Content	Organization	Link
Website Human Rights Campaign	<ul style="list-style-type: none"> • CEI Index Criteria, toolkit samples and links • General and business case resources 	Human Rights Campaign	www.hrc.org
Website National Gay and Lesbian Task Force Policy Institute	<ul style="list-style-type: none"> • Reports and research around LGBT topics • Opening the door to transgender inclusiveness report 	The Task Force	www.thetaskforce.org/reports_and_research
Website Parents, Families, and Friends of Lesbians and Gays	<ul style="list-style-type: none"> • Straight for Equality ally program • Terminology and cultural information • Local resources and contacts 	PFLAG	www.pflag.org
Website Out & Equal	<ul style="list-style-type: none"> • Workplace related resources around LGBT advocacy topics • Workplace Summit workshop content 	Out and Equal	www.outandequal.org/workplace-resources
Workshop Building Bridges	<ul style="list-style-type: none"> • Out and Equal ally building training • Train the trainer offers a historical and in-depth understanding of the LGBT environment 	Out and Equal	Contact Pat Baillie p:(415) 694.6521 pbaille@outandequal.org
Article <i>How to Help LGBT Employees Help your Organization Grow</i>	<ul style="list-style-type: none"> • Article written to help employers understand/support LGBT employees • Checklist of suggestions / best practices from Ford, IBM and Lucent 	Multicultural Advantage	www.multiculturaladvantage.com/recruit/group/LGBT/How-to-Help-LGBT-Employees-Help-Your-Organization-Grow.asp
Article <i>Acceptance of Gays, Lesbians Is A Big Part of Kodak's Diversity Picture</i>	<ul style="list-style-type: none"> • Discusses Kodak's approach to LGBT training for employees / leaders • Kodak uses some innovative training techniques and approaches 	Workforce Management	www.workforce.com/section/111/feature/23/90/44/#
Handout <i>FAQ by Managers Regarding LGBT workplace issues</i>	<ul style="list-style-type: none"> • Reasonably thorough FAQ document about supervising / managing LGBT employees • Provides content that may be leveraged for developing our training 	GLBT Workplace.com	www.mycoachdave.com/glbworkplace/Manager%20FAQ-8x11.pdf

For more information, please contact:



Orlan Boston
Principal
Deloitte Consulting LLP
Office: +1 212 618 4285
E-mail: oboston@deloitte.com



Nathan Knight
Manager
Deloitte Consulting LLP
Mobile: +1 404 405 4564
E-mail: nknight@deloitte.com



Blake Wallace
Senior Consultant
Deloitte Consulting LLP
Mobile: +1 213 952 1101
E-mail: bwallace@deloitte.com

About Deloitte

Deloitte refers to one or more of Deloitte Touche Tohmatsu, a Swiss Verein, and its network of member firms, each of which is a legally separate and independent entity. Please see www.deloitte.com/about for a detailed description of the legal structure of Deloitte Touche Tohmatsu and its member firms. Please see www.deloitte.com/us/about for a detailed description of the legal structure of Deloitte LLP and its subsidiaries.